

Social Gospel in
Contemporary Times
– The Realities &
Aspects of Occupying
until Jesus Christ
Returns!

DR. ALICE FARRELL,
DIRECTOR SOCIAL
JUSTICE AND
HOLISTIC CARE

Marching Orders/Foundational Scriptures cont.

Mathew 25 vs. 24-40

³⁴ Then shall the King say unto them on his right hand, Come, ye blessed of my Father, inherit the kingdom prepared for you from the foundation of the world:

³⁵ For I was an hungry and ye gave me meat: I was thirsty, and ye gave me drink: I was a stranger, and ye took me in:

³⁶ Naked, and ye clothed me: I was sick, and ye visited me: I was in prison, and ye came unto me.

³⁷ Then shall the righteous answer him, saying, Lord, when saw we thee an hungred, and fed thee? or thirsty, and gave thee drink?

³⁸ When saw we thee a stranger, and took thee in? or naked, and clothed thee?

³⁹ Or when saw we thee sick, or in prison, and came unto thee?

⁴⁰ And the King shall answer and say unto them, Verily I say unto you, Inasmuch as ye have done it unto one of the least of these my brethren, ye have done it unto me.

Marching Orders/Foundational Scriptures Conti.

29 Bible Verses about Caring For Widows And Orphans

James 1:27 “Pure religion and undefiled before God and the Father is this, To visit the fatherless and widows in their affliction, and to keep himself unspotted from the world.” King James Version (KJV)

Proverbs 31 vs. 8-9 Speak up for those who cannot speak for themselves, for the rights of all who are destitute. **9** Speak up and judge fairly; defend the rights of the poor and needy.

Micah 6:8 ⁸He hath shewed thee, O man, what is good; and what doth the LORD require of thee, but to do justly, and to love mercy, and to walk humbly with thy God?

Mathew 25 in Contemporary Times –

What Are We Really Asked To Do?

Let Us -the Church - Go on a Journey This Morning!

Gospel Meets

2021 Community/Society –

Social Gospel Hour

Eight Dimensions of Wellness

Emotional—Coping effectively with life and creating satisfying relationships

Environmental—Good health by occupying pleasant, stimulating environments that support well-being

Financial—Satisfaction with current and future financial situations

Intellectual—Recognizing creative abilities and finding ways to expand knowledge and skills

Occupational—Personal satisfaction and enrichment from one's work

Physical—Recognizing the need for physical activity, healthy foods, and sleep

Social—Developing a sense of connection, belonging, and a well-developed support system

Spiritual—Expanding a sense of purpose and meaning in life - The Church Focus ----How does the other areas fit into our Christian walk? What about these other areas? - 2 Safety Nets – Provider Safety Net and Faith Communities' Safety Net---

Unmasking – Congregants
are Members of the
Communities – Let's take
a look through social
justice and Trauma
informed lens. Removing
the Insulation Bubbles!

Declaration of Independence:.. We Hold these truths to be self-evident, that all men are created equal, that they are endowed by their Creator with certain unalienable Rights, that among these are Life, Liberty and the pursuit of happiness – United States - A Reality for some but not for all---Civil Unrest in the Nation/Jan. 6 2021

Definition of Trauma

Trauma results from an event, series of events,

or set of circumstances that is experienced

by an individual as physically and emotionally

harmful or threatening and that has lasting

adverse effects on the individual's physical,

social, emotional, or spiritual well-being.

- **Source: Substance Abuse and Mental Health Services Administration (SAMHSA)**

Substance Abuse Mental Health Services Agency (SAMHSA)

Event Trauma event – Direct and exposure/witness

Experience Unique to Individual, Family, Community,
Chronological/Developmental age etc.

Effect - Individual, Family and Community

(Immediate, long term effect)

Trauma-Informed Approach Concept

A program, organization, or system that is trauma-informed:

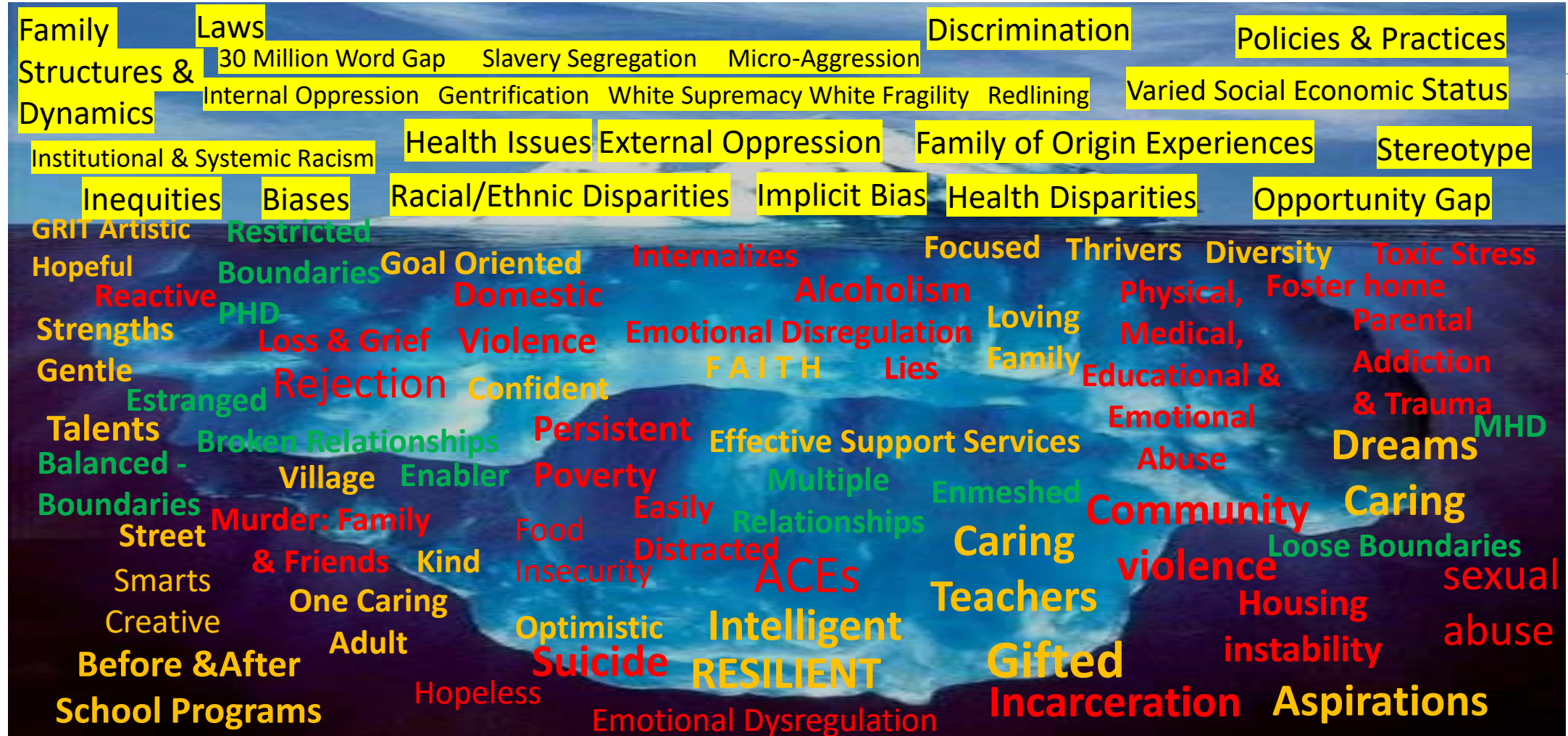
- *Realizes* the widespread impact of trauma and understands potential paths for recovery;
- *Recognizes* the signs and symptoms of trauma in clients, families, staff, and others involved with the system;
- *Responds* by fully integrating knowledge about trauma into policies, procedures, and practices; and
- Seeks to actively resist *re-traumatization*.” SAMHSA

Six Key Principles of Trauma-Informed Approach

1. Safety (Staff, Tenants, Vendors etc.)
2. Trustworthiness and Transparency
3. Peer support
4. Collaboration and mutuality (Between Stakeholders)
5. Empowerment, voice and choice (Critical) (Genuine, Authentic Relationship)
6. Cultural, Historical, and Gender Issues

Community/Society SnapShot

COVID 19 CIVIL UNREST SHADOW PANDEMIC
OPIOID EPIDEMIC SOCIAL DETERMINANTS OF HEALTH RACIAL INEQUITIES



The Uniqueness of Every Student

Learning preferences

Temperaments

Culture

Coping Abilities

Home Life

Community

Intellectual, Social and Emotional Abilities

Early Childhood Experiences

Social Economic Status



Children/Youth – Parent/Family Members/Educator Related Interactions Inside and Outside of faith communities

Agitate, Yelling
 Apathy
 Antagonize
 Black Mail
 Blaming, Belittle
 Being Condescending
 Calling out students
 Being Closed Minded
 Discouraging
 Discriminating
 Disrespectful
 Dismissive
 Degrading, Being Fake
 One way communication
 “Reprimanding” students
 in the presence of other
 students/embarrassing
 students

Humiliate
 Ignore, Inflame
 Instigate, Inpatient
 Lies, Jokes -negative
 Low expectation
 Limiting, Misguiding
 Nonchalant,
 Opinionated
 Being Petty
 Bias filled
 Comments and
 interactions –
 Using Micro-Aggression
 With students and
 Parents
 Use of Aggressive,
 Passive Aggressive and
 Passive styles of
 communication

Retaliates
**Use of Sarcasm &
 Making Mean
 Spirited comments**
 Shaming
 Over Sharing
 Redirecting-
 Aggressively
 Stereotyping
 Being Unreliable
 Unpredictable
 Use of Threats
 Silent Treatment
 Withholding affection
 Being a Hypocrite
 Engaging in Power &
 Control Struggles with
 students

Effectively Engage
 Students & Parents
 Use Affirmations
 Acknowledgment
 Believe in students’
 capacity to learn
 Compassionate
 Celebrate efforts/
 successes
 Be Devoted,
 Develop Cultural
 Sensitivity, Story
 Telling, Encouraging
 Empathetic
 Use Bi-Directional
 Communication
 Give Reminders
 Promote curiosity &
 Use of EBP - Flip
 Classroom, Peer to
 Peer , Prompt

Promote Innovation & Creativity
 Use Story Telling
 Give students’ Options
 Effective & Engaging
 Instructional/Delivery
 Practices, and Content
 Be VERY comfortable w/
 curriculum content
 Be Forgiving ,Gratitude
 Graphic organizers, Kind
 Being Hopeful & Helpful-
 Good Jokes, Loving
 Use Praise, Music, Optimism
 Engage Parents, Encouraging
 Use Proximity
 Effective use -Exit Tickets
 Show interest in and
 Teach the whole child

Post Brian Science
 related diagrams
 Be energetic
 Use Physical activity
 Be Reliable, Respectful
 Show Interest
 Integrate S.E.L
 through out academic
 and non-academic
 schedule
 Smile, Symbols
 Extracurricular
 Scaffolding
 Thoughtful Use of
 Technology
 Being a Coach,
 Facilitator of Learning

Adverse Childhood Experiences

Adverse Childhood Experiences

CDC-Kaiser Permanente ACE Study, 1998

The original ACE Study was conducted at Kaiser Permanente from 1995 to 1997 with two waves of data collection.

One of the largest investigations of childhood abuse and neglect and later-life health and well-being.

Over 17,000 Health Maintenance Organization members from Southern California receiving physical exams completed confidential surveys regarding their childhood experiences and current health status and behaviors. [ACES Connection](#)

The ACEs study documented that adverse childhood experiences (ACEs) can contribute significantly to negative Adult physical and Mental Health Outcomes

Ongoing surveillance of ACEs

- CDC assesses the medical status of the individuals who participated in the study
- Via periodic updates of morbidity and mortality data.

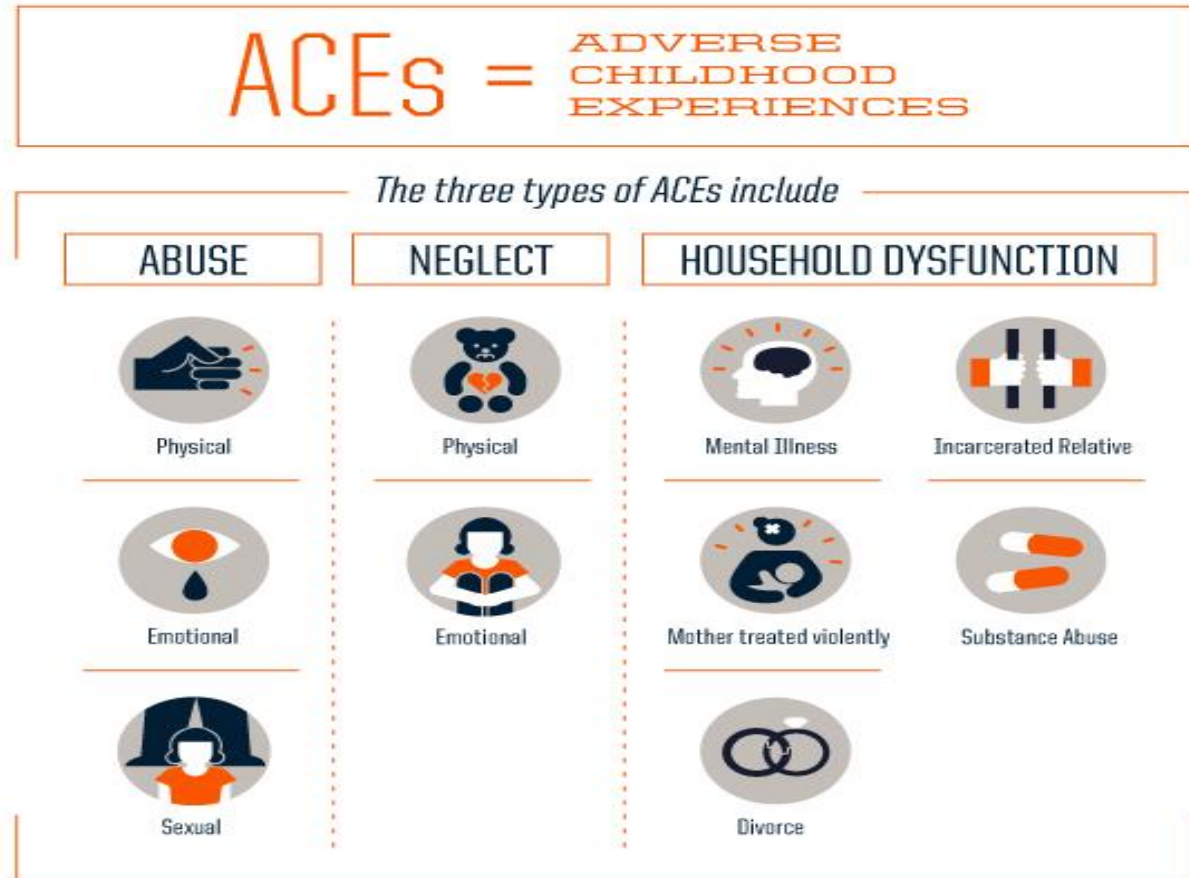
[*https://www.aap.org/en-us/Documents/ttb_aces_consequences.pdf](https://www.aap.org/en-us/Documents/ttb_aces_consequences.pdf)

ACEs Categories

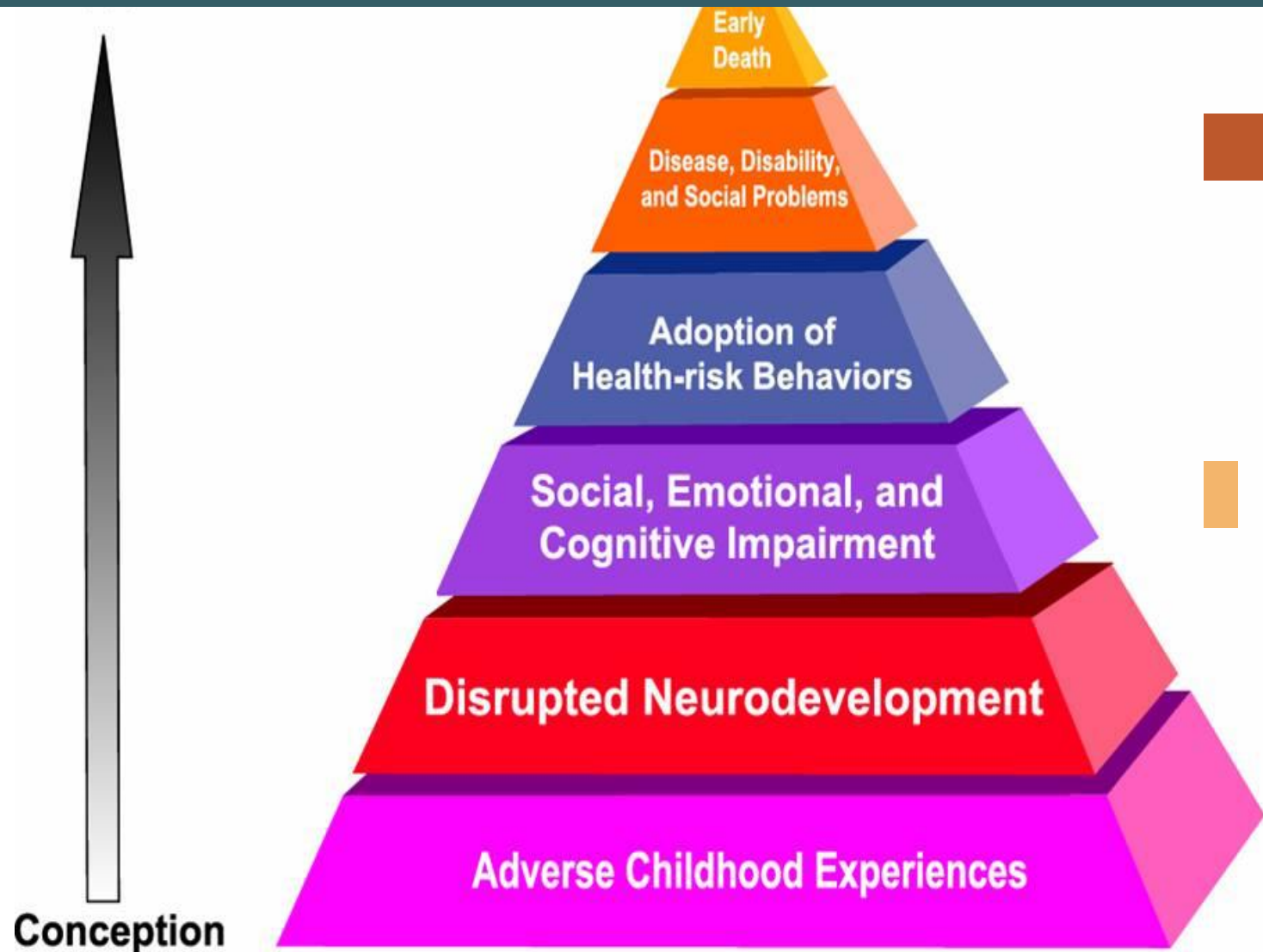
Physical abuse
Emotional
Sexual abuse

Physical neglect
Emotional neglect

Household mental illness
Mother treated violently
Divorce
Incarcerated Relatives
Household substance abuse

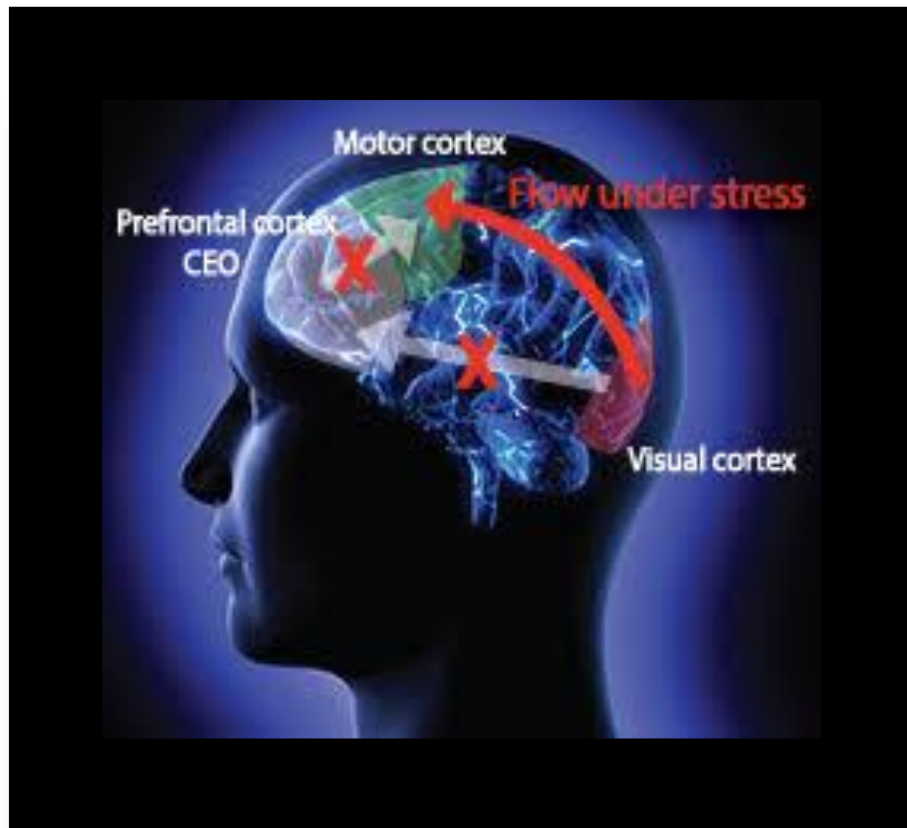


Adverse Childhood Experiences Study



Mechanisms by Which Adverse Childhood Experiences Influence Health and Well-being Throughout the Lifespan

5 Trauma Responses - Physiological Reactions: The 5 F's



AUTONOMIC NERVOUS SYSTEM

Hyperarousal, alarmed / startled.

Increases heart rate, blood pressure, breathing.

FIGHT

Physical aggression: attacker may be smaller / weaker.

Verbal aggression, e.g., saying "no".

traumadissociation.com

FLIGHT

Running, bawking away or hiding.

If there is somewhere to escape to or hide.

PARASYMPATHETIC NERVOUS SYSTEM

Hypoarousal, dissociation.

Metabolic shutdown, numbing. Hiding behaviors.

FREEZE

Tonic immobility. Involuntary response.

Less chance of injury.

FLOP / FAWN

Collapse and play dead.

After freeze fails, conserves energy, wounds heal.

FRIEND

Trauma bonding (attach) / Stockholm Syndrome

Social engagement. Prolonged or infant trauma.

traumadissociation.com

source: Schore, 2009; Lodrick 2007

Increase in the Number of ACEs Increases Risk

Alcoholism and alcohol abuse

Chronic obstructive pulmonary disease

Depression

Fetal death

Health-related quality of life

Illicit drug use

Ischemic heart disease

Liver disease

Poor work performance

Financial stress

Risk for intimate partner violence

Multiple sexual partners

Increase in the Number of ACEs Increases Risk

Sexually transmitted diseases

Smoking

Suicide attempts

Unintended pregnancies

Early initiation of smoking

Early initiation of sexual activity

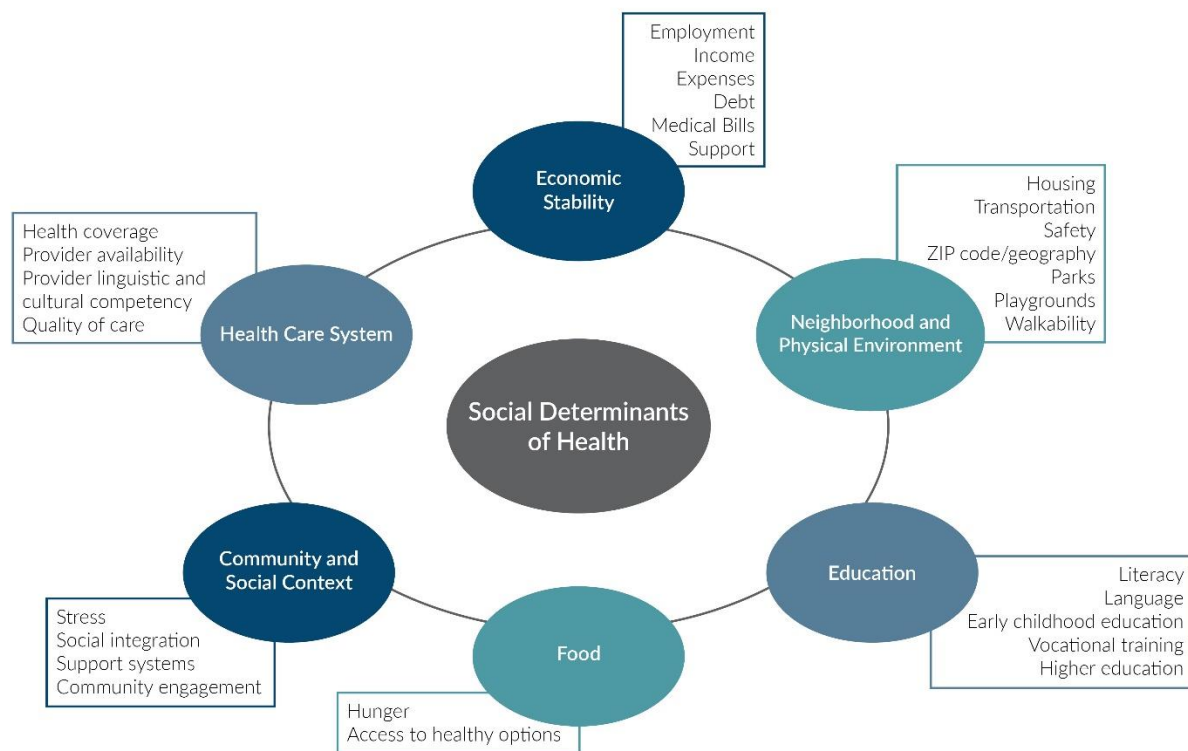
Adolescent pregnancy

Risk for sexual violence

Poor academic achievement

*This list is not exhaustive. For more outcomes see [selected journal publications](#).

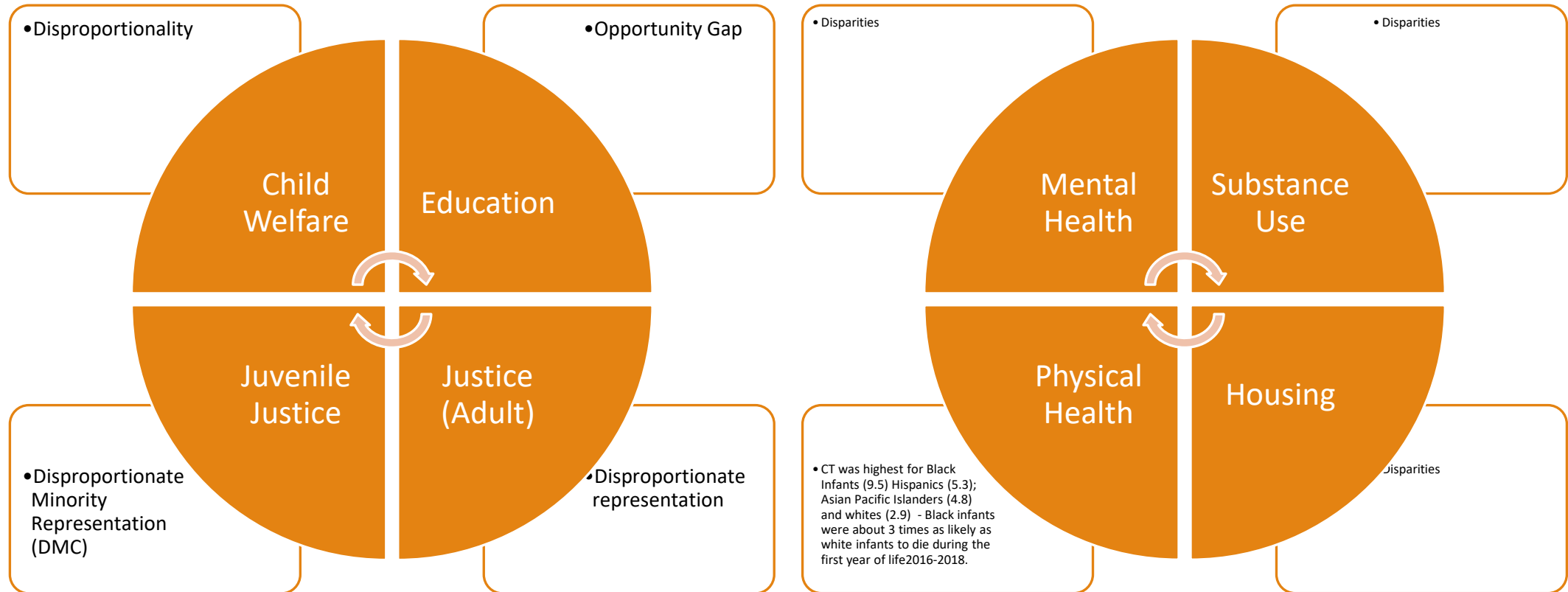
Social Determinants of Health



Health Outcomes

Mortality, Morbidity, Life expectancy, Health care expenditures, Health status, Functional limitations

Disparities Across Systems



The Wave is Here/Coming/Crashing at the Church Doors Present and Post Covid Realities – Across the Nation

¼ Girls/Women, ¼ Boys

Increased Loneliness

Increased Community Violence - Homicide case – Psychologist inquiry – Collaborative Effort

Increased Suicidal Ideations and Plans – Rise in Suicide for Black Boys

Increased Mental Health Issues/Disorders and Engagement in Risky Behaviors

Increased Substance Use/Disorder and Opioid Addiction –

Increased in Education Opportunity Gap

Increased Poverty – Unemployment, underemployment, forced vacation/furloughs – Increased Child welfare Referrals

Housing instability – Couch Surfing, Transient – Homelessness

Increased agitation due to realities of disparities and inequities – civil rights violations

Children Orphanage – Fatherless and Motherless - Reduction in support system ---Increased in widowhood

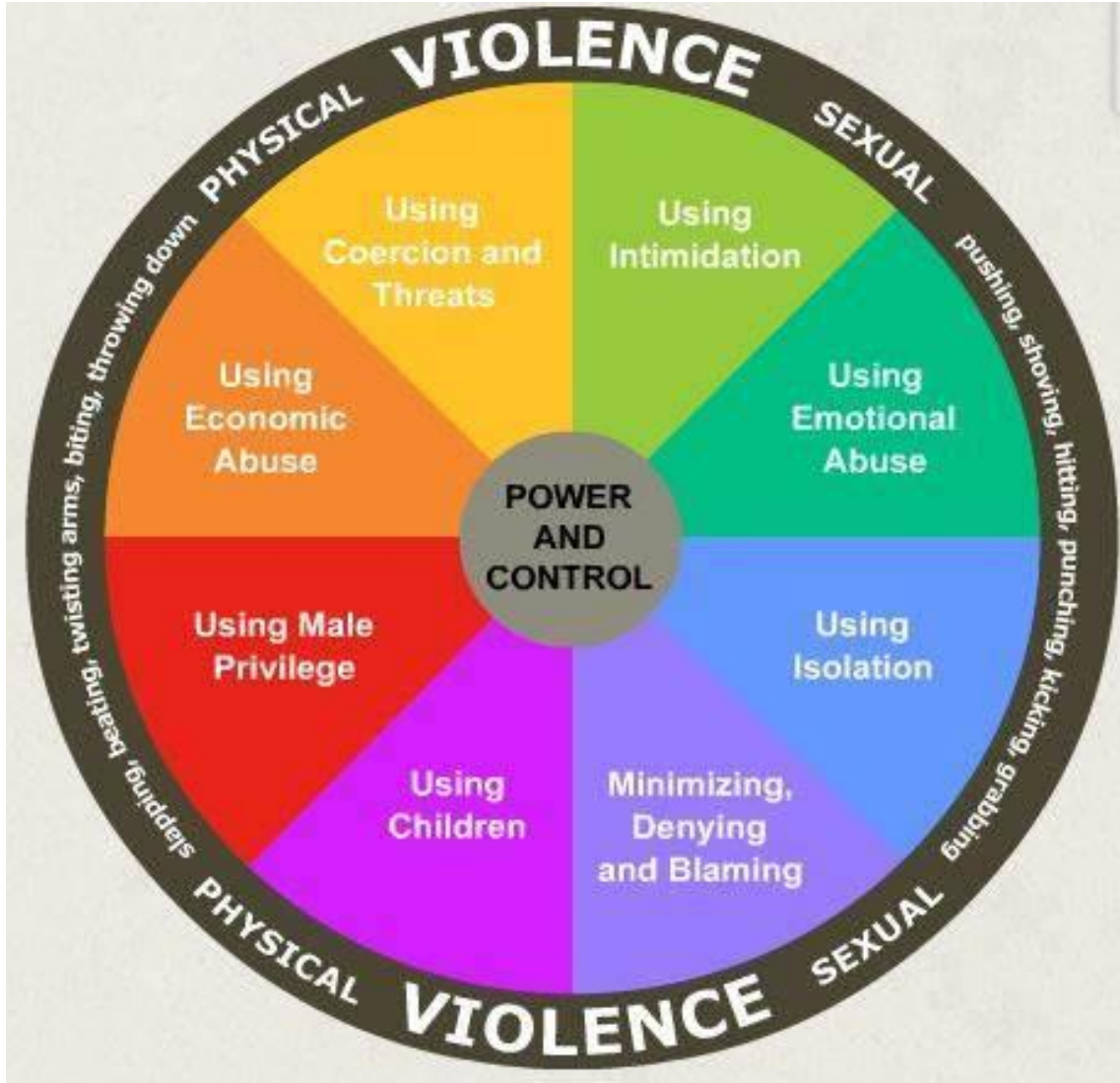
Shadow Pandemic – Increased Intimate Partner Violence – Within Global Pandemic --1/4 (Congregation)

Children Orphanage & Child Welfare Involvement

Separation, Loss and Grief -

Children Orphanage - More than 120,000 children in the United States lost a primary caregiver - a parent or grandparent responsible for providing housing, basic needs and care - due to COVID-19-associated death, showed a study published in the medical journal Pediatrics, Trend reports citing Xinhua .

In addition to the 120,630 children who were estimated to have lost a primary caregiver, 22,007 lost a secondary caregiver, or a grandparent providing housing but not most basic needs between April 1, 2020, and June 30, 2021, according to the study. [Over 120,000 U.S. children lose a parent or caregiver amid C... | MENAFN.COM](#)



Power and Control –
Increase in Intimate
Partner Violence –

other – Immigration
related power and
control
manifestations

Case Scenarios

1. Homicide/Double Homicide/Suicide/CCSD
2. Human Sex Trafficking and Sexual Abuse – Mandated Reporting Status –Virtual Training
3. Child Slavery/Sex Trafficking – Black and Brown youth missing – WA and around the nation – EH Detective sharing; Black and Brown youth in trafficking – return to school (principal and youth account) Manch. TedTalk – Signs
4. CT Coalition - Against Domestic Violence & Sexual Assault – Reporting



NAVIGATION



Equity Intersects with Empathy




Human Agents – Empathy

Systems Committed to the Promotion of Equity and Elimination of Disparities

Equity Foundational:

- **Laws**
- **Policies**
- **Programs**
- **Practices**
- **Priority Selections**
- **Partnerships**
- **Resource Allocation**

Disparities Intersects with Apathy



Disconnect
Disengagement
Despair
Depression
Poor Quality of
Life
Death - Early

Human Agents – Apathy &

Systemic Institutional and Structural Racism

Oppression

Inequities Built into/Foundation:

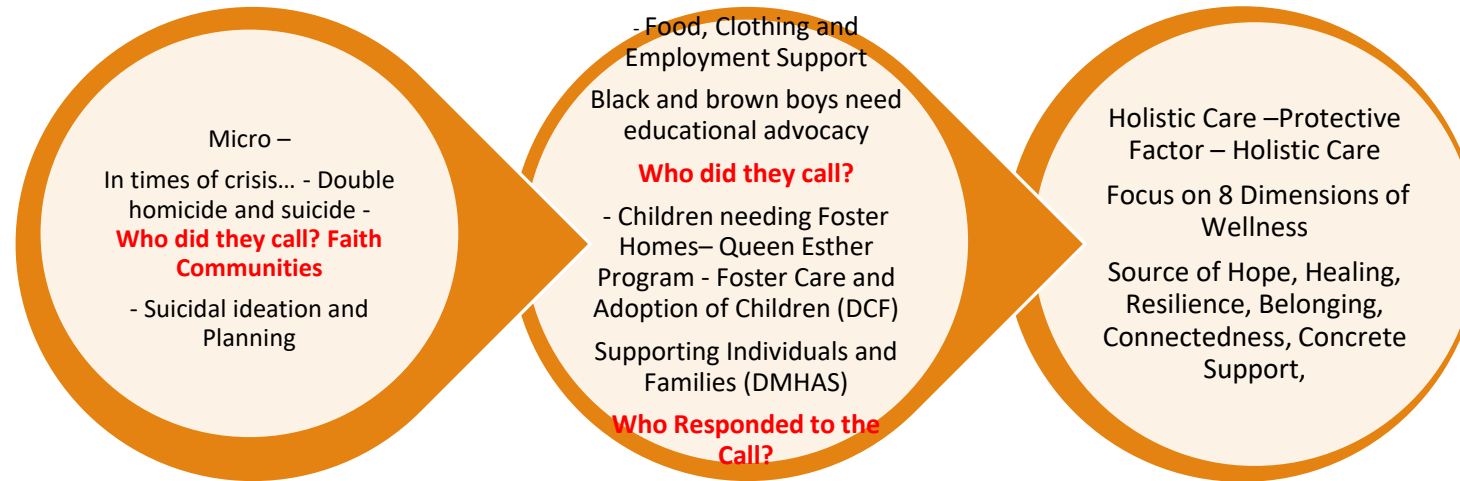
- **Laws**
- **Policies**
- **Programs**
- **Practices**
- **Priority Selections**
- **Partnerships (Lack Authenticity)**
- **Resource Allocation**

SAFETY NETS MEETING

HUMANITY – “Other”
NEEDS

HOLISTIC CARE –
WHERE IS THE CHURCH?

Faith Institutions Involvement –



Historical, Current and Future

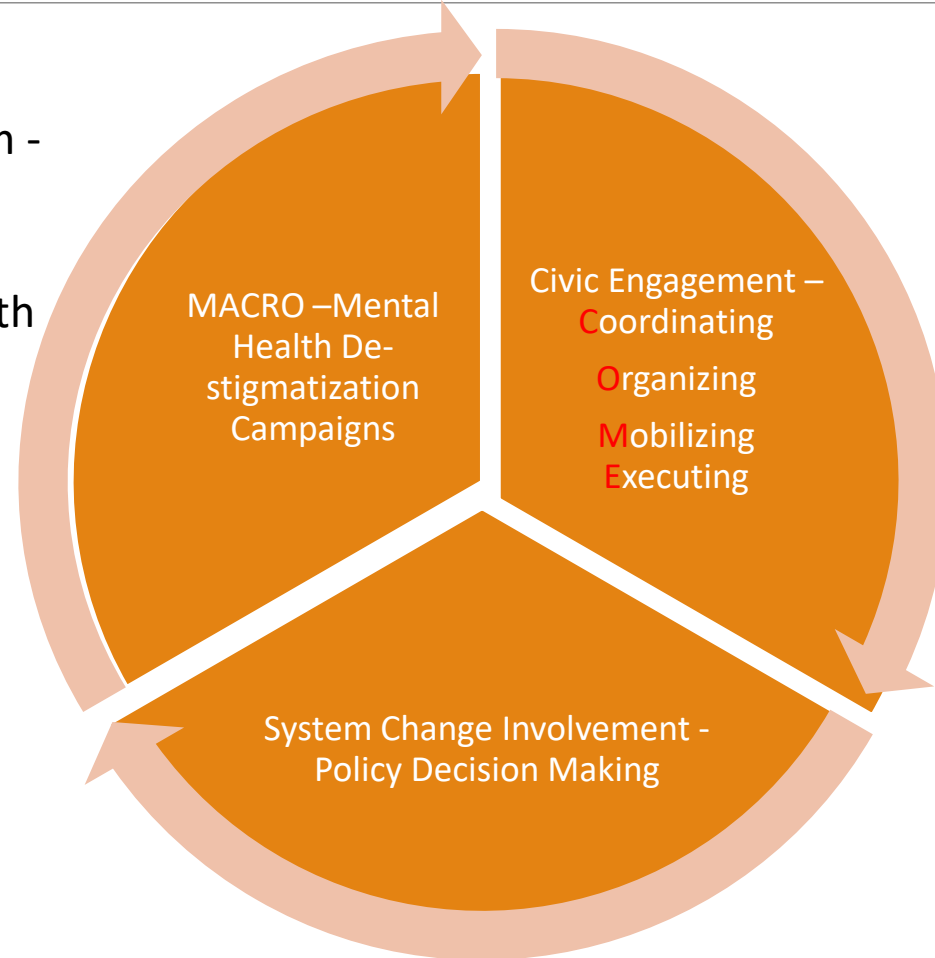
Faith Institutions Involvement –



Historical, Current and Future

Faith Institutions' Involvement –

Social Justice Arm -
Vested in System
Change and
Community Health
ADVOCACY



Historical, Current
and Future

Faith Institutions Involvement Cont. – Historical & Current

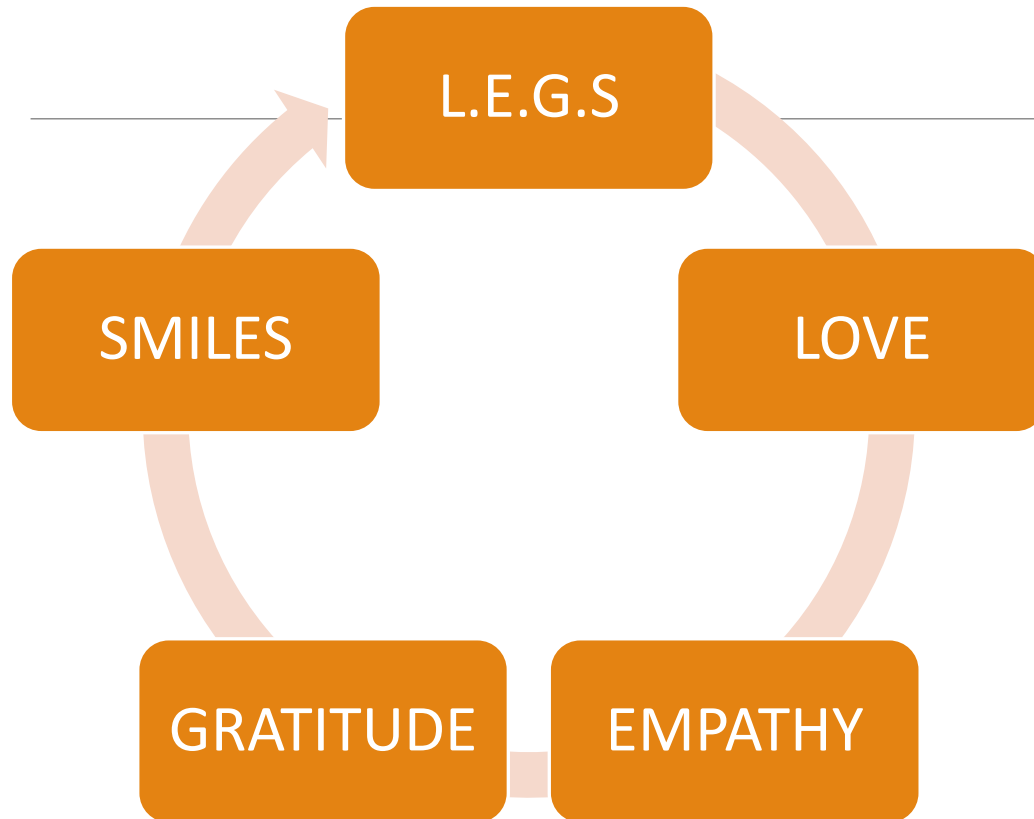


SAFETY NETS MEETING

HUMANITY – “Other”
NEEDS

HOLISTIC CARE –
PROVIDER SAFETY NET

OBCCS MODEL OF CARE



L.E.G.S. must be embraced by those who hope to **successfully partner** with youth, individuals, parents, families and communities

L.E.G.S. is essential to **effectively** support families as they move through & about on the parent engagement/involvement continuum

L.E.G.S. must be a constant variable for an individual to be a **powerful and creative engager** of family members and communities

L.E.G.S. is necessary for individuals to **CONSISTENTLY** demonstrate genuine and empowering engagement practices

It is Transformation Time - Taking steps to Move from Talking to Walking

L.E.G.S.' Code of Operation - Activated for Action

**OBCCS Holistic
Care Framework**

ACEs, Trauma
Resilience - History
Dem./Geography/
Family of Origin
Physical & Behavioral
Health & Wellness

Culture, Values,
Traditions & Beliefs
(Religion/Spirituality)
Vulnerability, **Cultural Curiosity**
Humility, Sensitivity,
Responsiveness Inclusion

LENS
Social Determinants
-Advancing Equity &
**Addressing/
Eliminating
Disparities**

**Engagement &
Empowerment
Phases -
Empathy,
Equity, Education**

Social Emotional Development/
Emotional Intelligence &
Perspective Lens- **Families &
Workforce – Parallel Processes -
Self Care Practices**

**AUTHENTIC RELATIONSHIPS
& PARTNERSHIPS *Across the Board***
Responsibility
Quality of Education & Services-Youth & Family
Outcomes & Satisfaction
Workforce Preparedness - Enhancement &
Agency Financial Solvency
Accountability

Foster Interdisciplinary
/Agency/Departments Cross Sector
& Community Collaborations –
Silos Intellectual humility
Systems' Integration – Impact of
Fragmentation and System
Tension/Chaos

Macro
Systems-Promoting
Integration & Program -
Community Capacity
Building Infrastructure
Support
Equitable Laws

Mezzo
Organization
/School Culture,
Structure--
Infrastructure –
Policies, Practices
& Supervision and
Support
S.O.S.

←
**Equity Meets Disparities
thru Human Agents and
Personal Agency**

Micro
Approach-
Strength /Assets ,
Evidence &
Recovery Based–
Systems- Ecological
Catalysis for
Action & Change

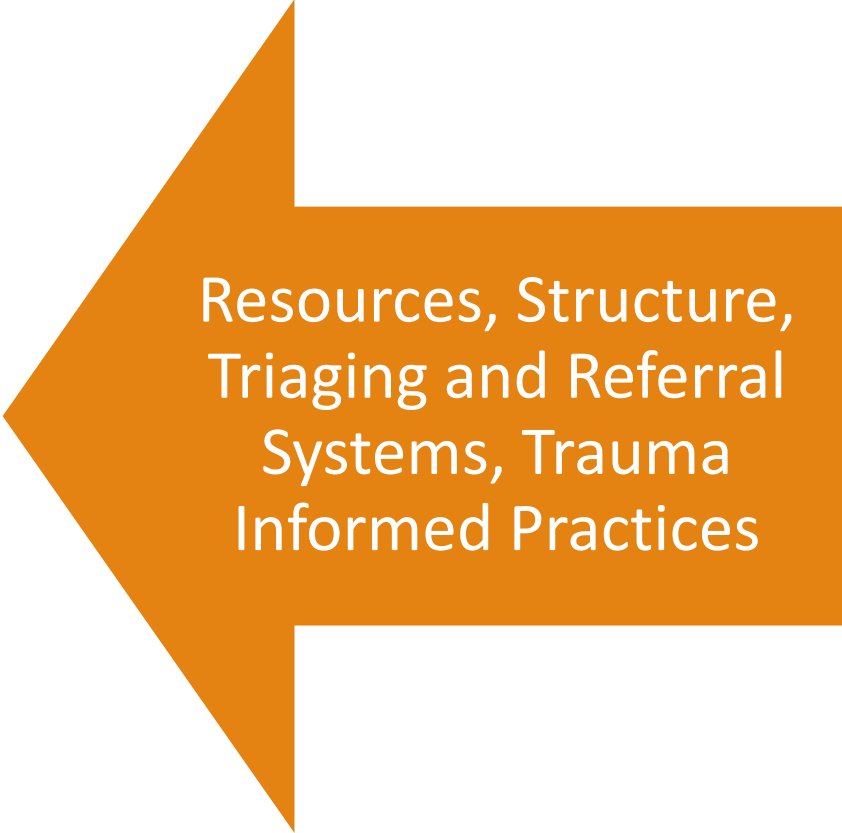
Youth & Family
Engagement
Intersection with
Maslow Needs
Hierarchy --

The Intersection Point – Spiritual
Community Broker – Triaging Processes
Discussion

Faith and Community Safety Nets Working Together Enlisting Use of Clinical Professionals



Congregation and
Community Asset
Mapping



Resources, Structure,
Triage and Referral
Systems, Trauma
Informed Practices

Faith and Community Safety Nets Working Together Enlisting Use of Clinical Professionals Cont.



Radical, Revolutionary
Authentic Partnering



Values
Trust
Communication
Humility
Shared Understanding

Black Churches and other Faith Institutions - Radical Authentic Partnership-Enlist Use of Clinical Professionals



Faith and Provider Community

The Wave is Here -
Expect it to Intensify-

Call to Action – Social Justice and Holistic Care - Radical and Revolutionary Paradigm Shift - Long Lasting – Generational Legacy

R.E.V.O.L.T



RESOLUTION



ENGAGEMENT



**VOICE
AMPLIFICATION**



OBSTRUCTION



LEVERAGING



TRANSPARENCY

Cross- Departmental/Auxiliary Involvement
Social Gospel -Contemporary Times
Trauma Sensitive, Informed, and Responsive

R.E.V.O.L.T

Resolution

Engagement

Voice Amplification

Obstruction

Leveraging and

Transparency,

R.A.V.E

Recognize

Affirm

Value

Empower

C.O.M.E

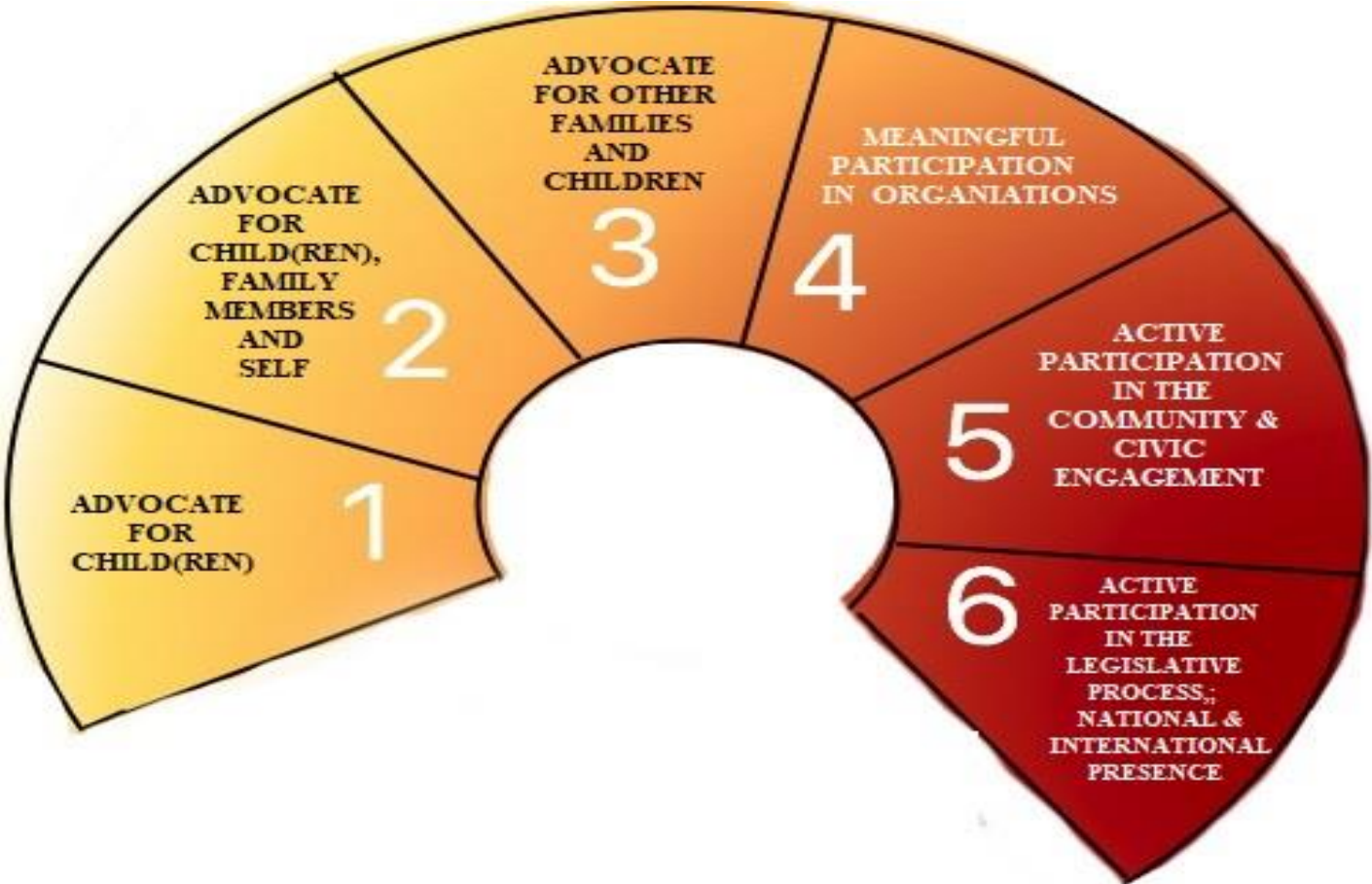
Coordinate

Organize

Mobilize

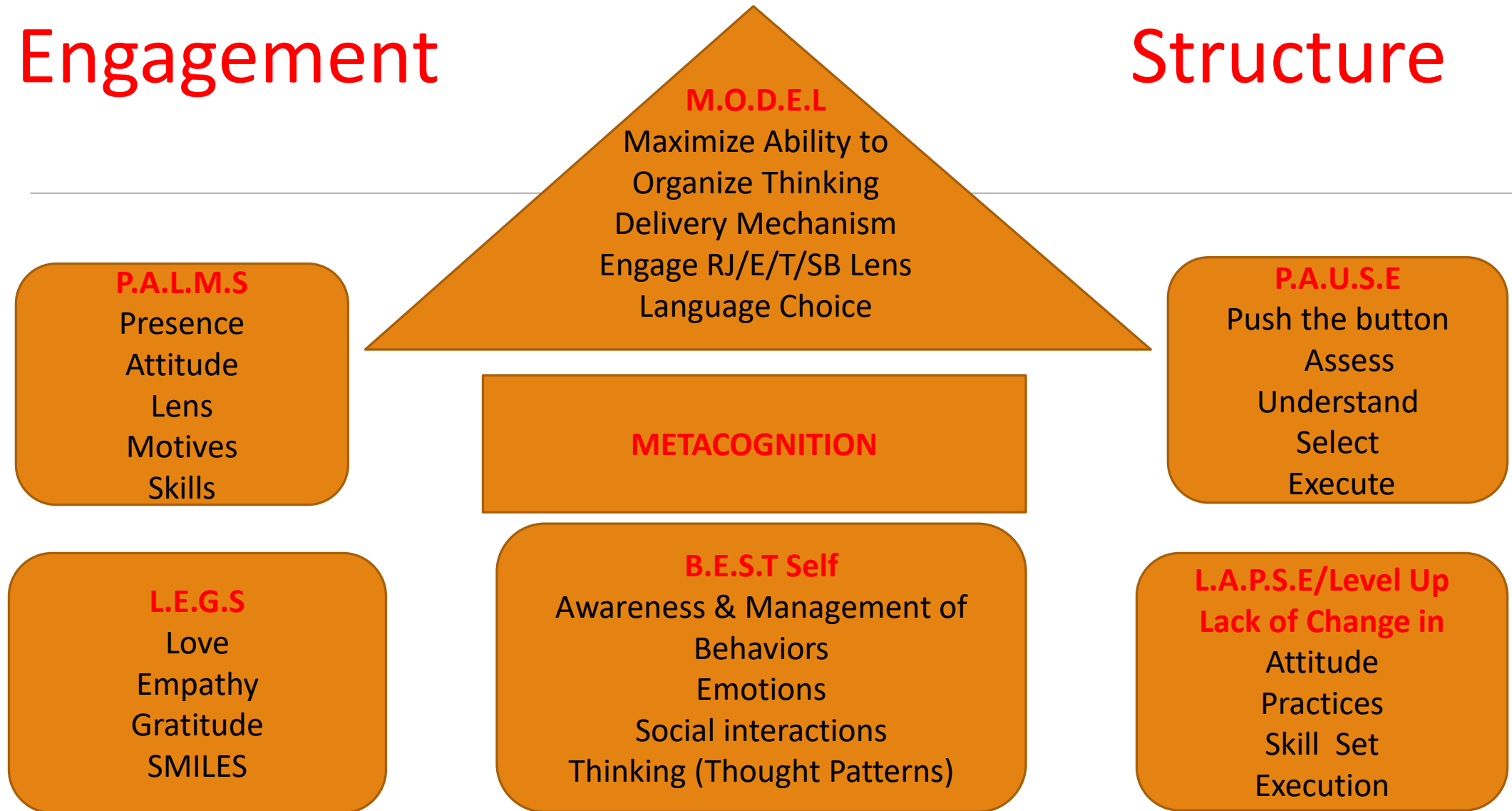
Execute

MEANINGFUL FAMILY ENGAGEMENT CONTINUUM (OBCCS) EMPOWERMENT FOCUS



Engagement

Structure



Church Leaders Must Radically Prepare
for and Address Vicarious/Secondary

Traumatization
Compassion Fatigue
Burn Out

Resources

[Matthew 25 KJV - Then shall the kingdom of heaven be - Bible Gateway](#)

[JAMES 1:27 KJV "Pure religion and undefiled before God and the Father is this, To visit the fatherless and widows in..." \(kingjamesbibleonline.org\)](#)

[Proverbs 31 - NIV Bible - The sayings of King Lemuel—an inspired utterance... \(biblestudytools.com\)](#)

[Micah 6:8 KJV - He hath shewed thee, O man, what is - Bible Gateway](#)

<https://www.samhsa.gov/nctic/trauma-interventions>

<https://acestoohigh.com/>

Dr. Nadine Burke TED Talk on ACEs

<https://www.bing.com/videos/search?q=nadine+burke+youtube+video&view=detail&mid=8EEB605155EB93EE993A8EEB605155EB93EE993A&FORM=VIRE>

<https://casel.org/>